



CENTRO TENDAGGI ARREDAMENTO
Italian Textile

Best Seller collection

"Best Seller" Collection, proposed by CTA®, is born to transform your home in refined environments able to improve your lifestyle.

The collection meets indeed the needs of any living environment thanks to a wide range of fabrics, developed with colors which go from natural color tones to pastels which can be perfectly coordinated with each other.

Expression of understated and essential elegance, the articles of **"Best Seller"** collection are suitable both for curtain and decoration and they born to enrich personality of all the environments of your home.





CENTRO TENDAGGI ARREDAMENTO
Italian Textile

Alma

The fabrics are featured by a melange yarn and the composition is 57%PL - 34% MODAL and 9% WOOL. It is suitable for curtain in width cm 295/300 with lead and available in 17 pastel colours.

Enea

Enea gives its name to this fabric made of 100%PL. Delicate and elegant nuances like white, natural, dove gray, grey, gold and cocoa. Available in 17 colours in cm 295/300 with lead.





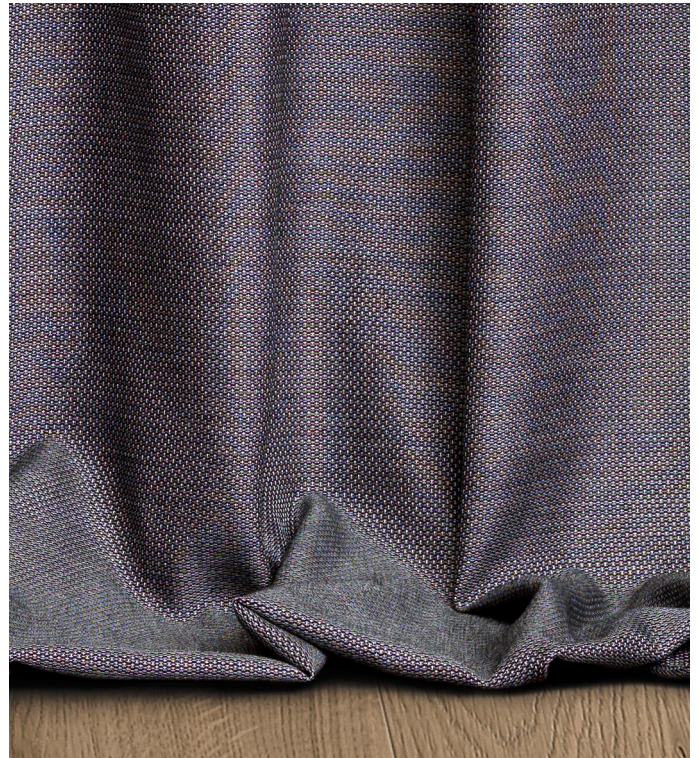
CENTRO TENDAGGI ARREDAMENTO
Italian Textile

Amos

It is suitable for curtain and duvet cover. **Amos** is a double woven fabric in 100% CO double twisted. With its modern style it is available in 4 colours (natural, lino color, earth tones and dove gray) in width cm 305/310

Zeno

This line of fabrics is composed of 86%PC - 14%PL with a weaved panama effect which makes it suitable for decoration. **Zeno** is in cm 315/320 available in colors with natural nuances like earth tones and grey.





CENTRO TENDAGGI ARREDAMENTO
Italian Textile

Dorian

This line of fabrics is featured by diagonal lines which make it suitable for decoration and upholstery. Composed of 57% Linen and 43% Cotton, **Dorian** is available in 9 colours (white, beige, dove gray, grey, earth tones, lime green, yellow olive and turquoise) in width 315/320 cm.



Romeo

Romeo is a decorative fabric with a canvas effect in mix linen 57% and cotton 43%. It is available in width 315/320 cm in a bright colors palette: white, beige, natural, dove gray, grey, earth tones, lime green, yellow olive and turquoise.





CENTRO TENDAGGI ARREDAMENTO
Italian Textile

Liam

Crochet fabric in 67%PC - 33%PL.

Liam is available in width cm

295/300 in 11 colours, from natural to silver, gold and bronze.

